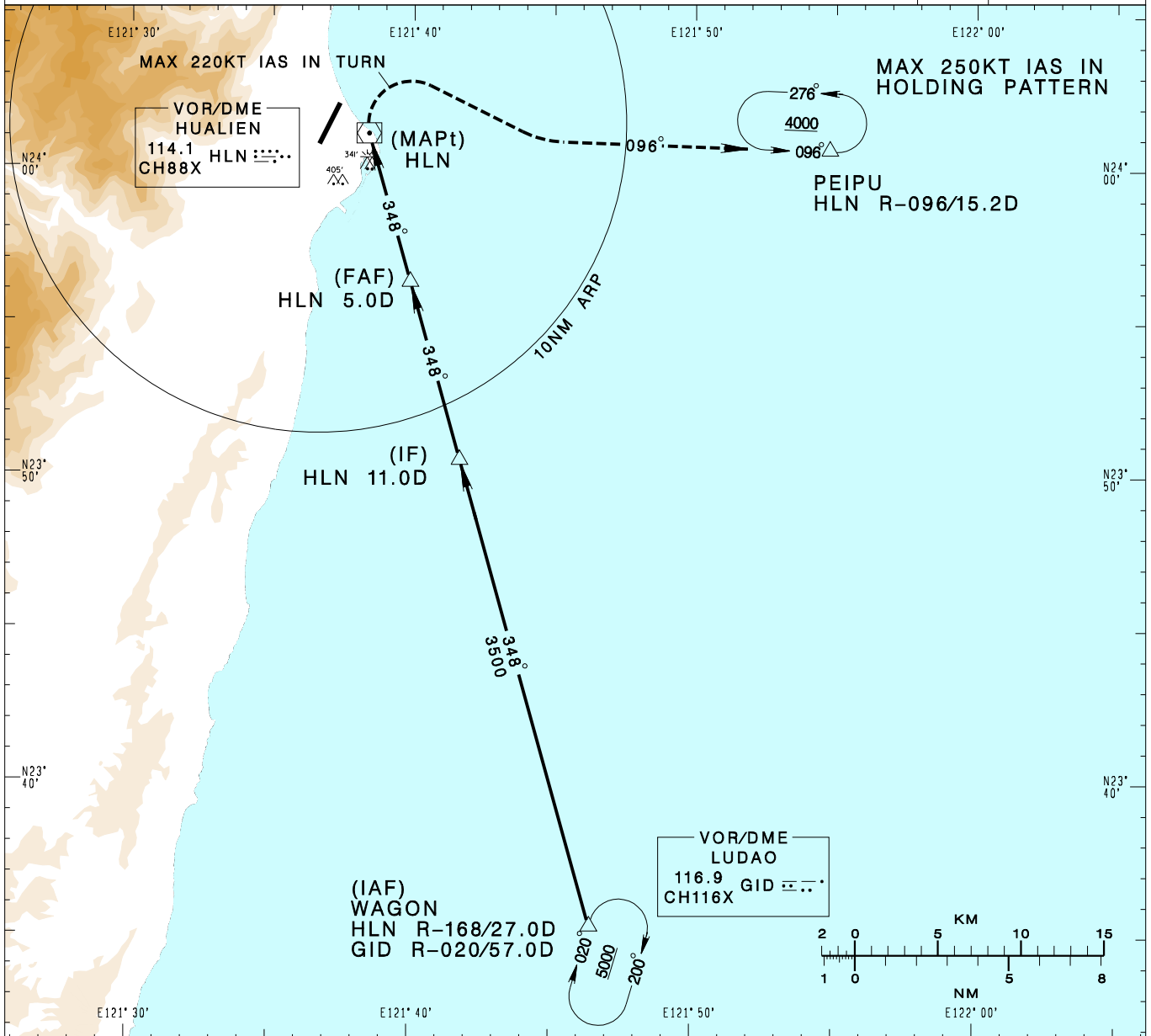


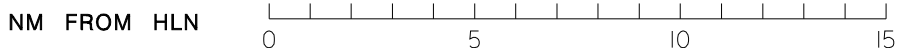
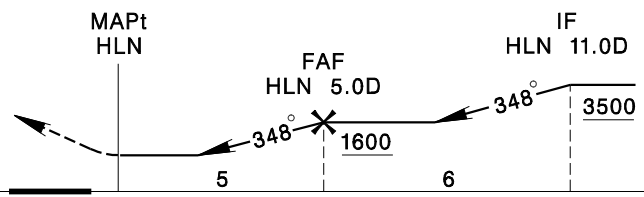
**花蓮機場**  
HUALIEN AD

RCYU  
VOR-B

|  |  |                     |  |                                   |  |                    |  |                  |  |
|--|--|---------------------|--|-----------------------------------|--|--------------------|--|------------------|--|
| TAIPEI APP<br>124.0 119.1 330.2 276.8  |  |                     |  | HUALIEN TWR<br>118.1 126.18 236.6 |  |                    |  | VAR 4° W         |  |
| Apt Elev: 51'  |  | Rwy03 THR Elev: 44' |  | Trans Level: FL130                |  | Trans Alt: 11,000' |  |                  |  |
|  |  | Rwy21 THR Elev: 51' |  |                                   |  |                    |  |                  |  |
| BEARINGS ARE MAGNETIC; DISTANCES ARE NAUTICAL MILES; ELEVATIONS, HEIGHTS IN FEET |  |                     |  |                                   |  |                    |  | MSA HLN VOR 25NM |  |



MISSED APCH:  
TURN RIGHT TO TRACK HLN R-096  
TO PEIPU, MAINTAIN 4000 AND HOLD.  
  
\*MAX 220KT IAS IN TURN.



MINIMA (OCA IN FT, VIS IN M, OCH IN FT)

| CATEGORY | A            | B            | C            | D            |
|----------|--------------|--------------|--------------|--------------|
| CIRCLING | 700/1900 649 | 700/2800 649 | 800/3700 749 | 800/4600 749 |

NOTE  
1. CIRCLING NOT AUTHORIZED WEST OF RWY.  
2. A 341ft MSL STACK AT 1.52NM EAST OF THR03.  
3. A 405ft MSL TREE AT 1.18NM SE OF THR03.  
4. CAUTION HIGH TERRAIN WEST OF THE AIRPORT.  
\* DME REQUIRED

CHANGES: NEW PAGE NUMBER